

Fred Harris and the Early DOC

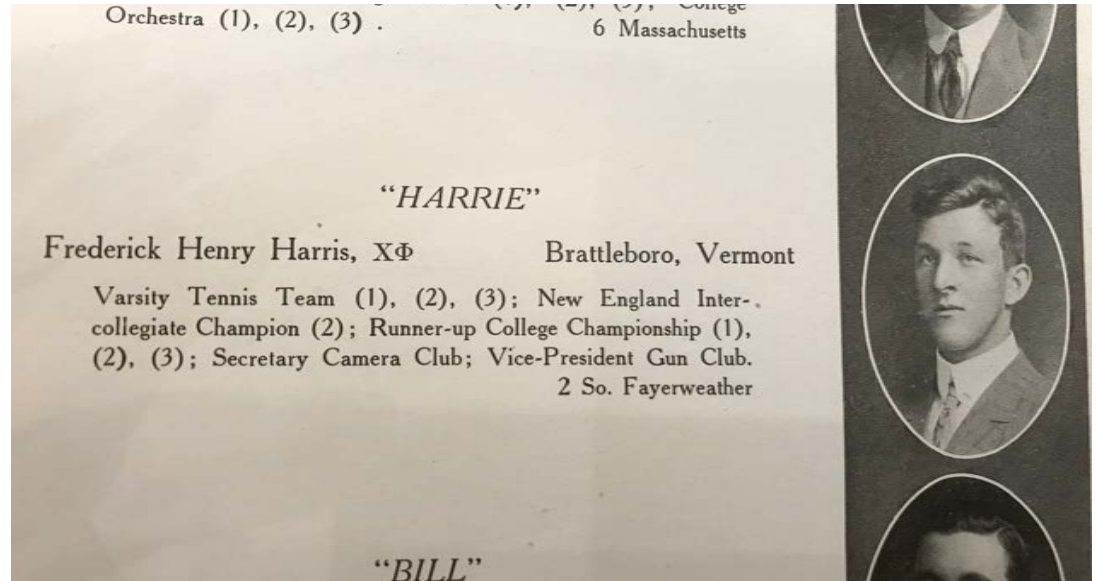


By: Bradley Hart



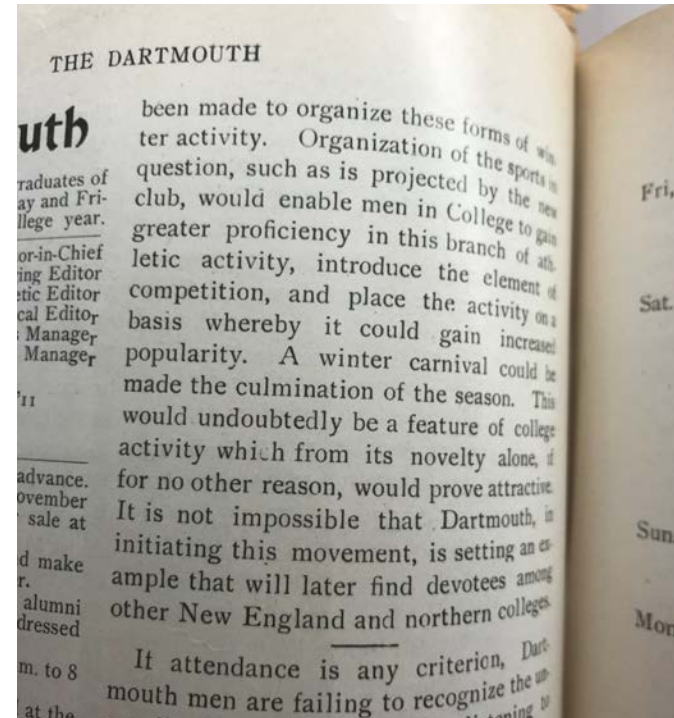
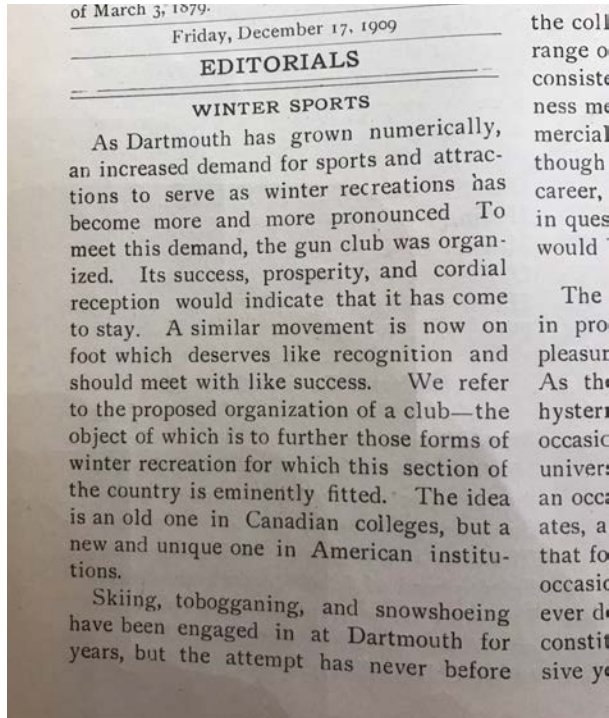
Who was Fred Harris?

- class of 1911
- avid skier
- founder of the DOC



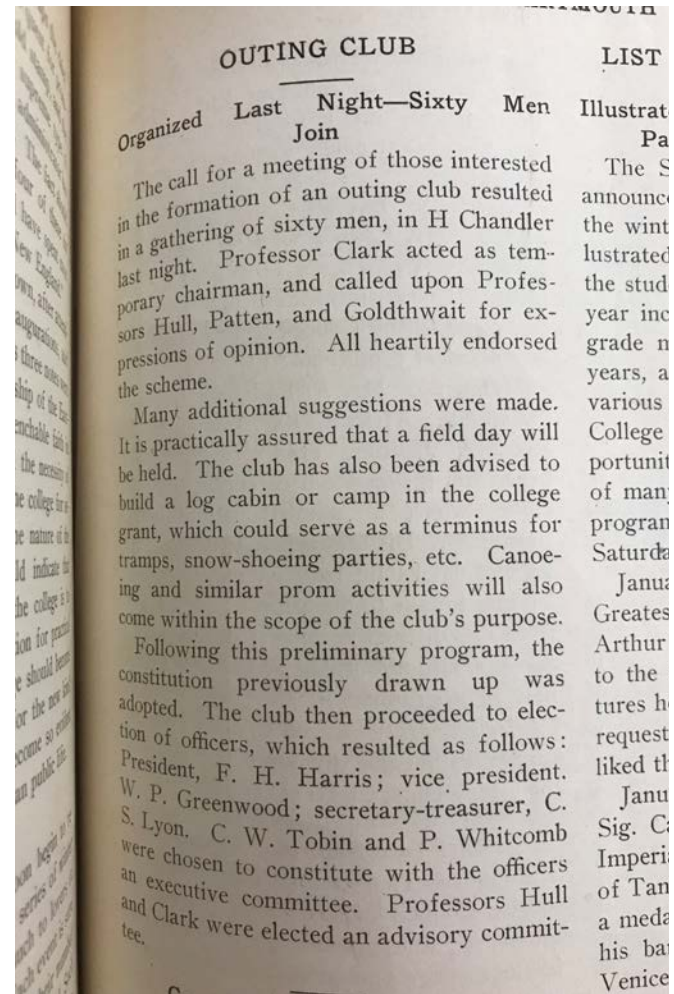
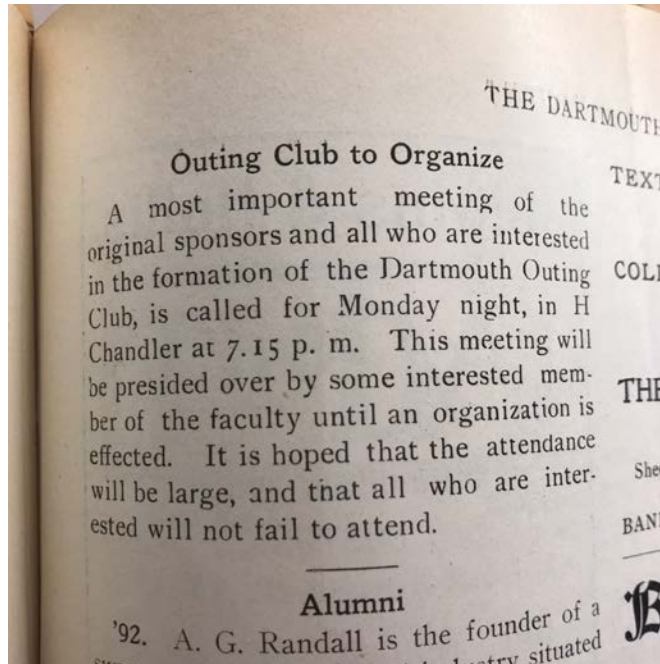
Forming the Club

- Harris' letter to *The Dartmouth* → Editorial



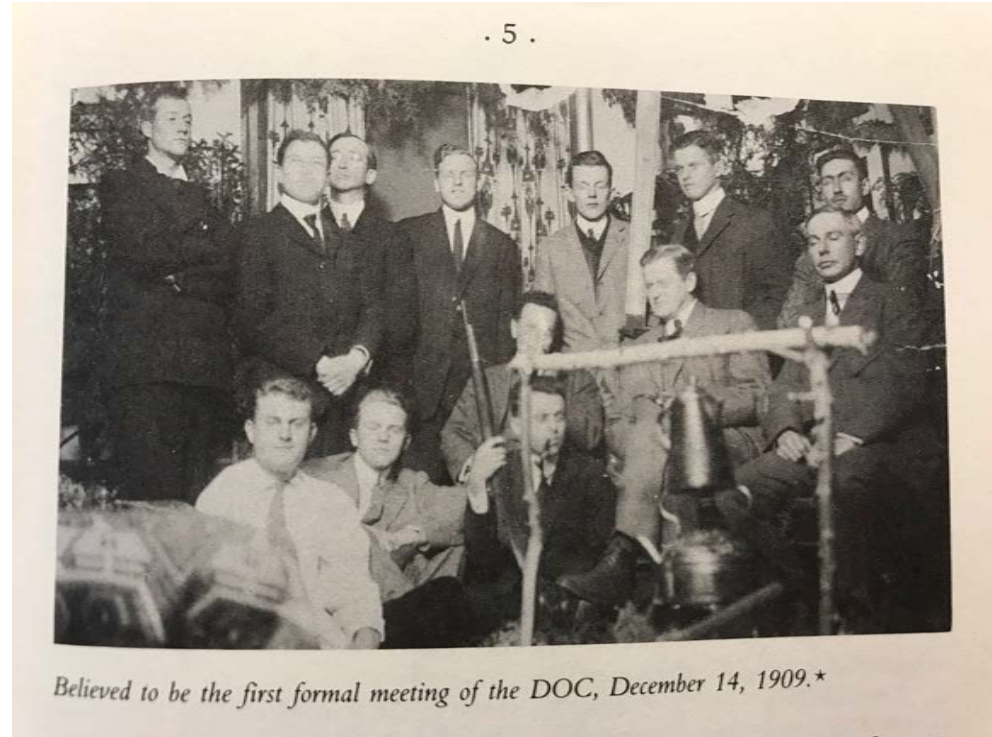
Forming the Club

- in *The Dartmouth*, December 1909



The First Meeting

- before the newspaper article
- faculty present
- already talks about a “field day”



Winter Carnival (Field Day)



Winter Carnival (Actually Winter Carnival)



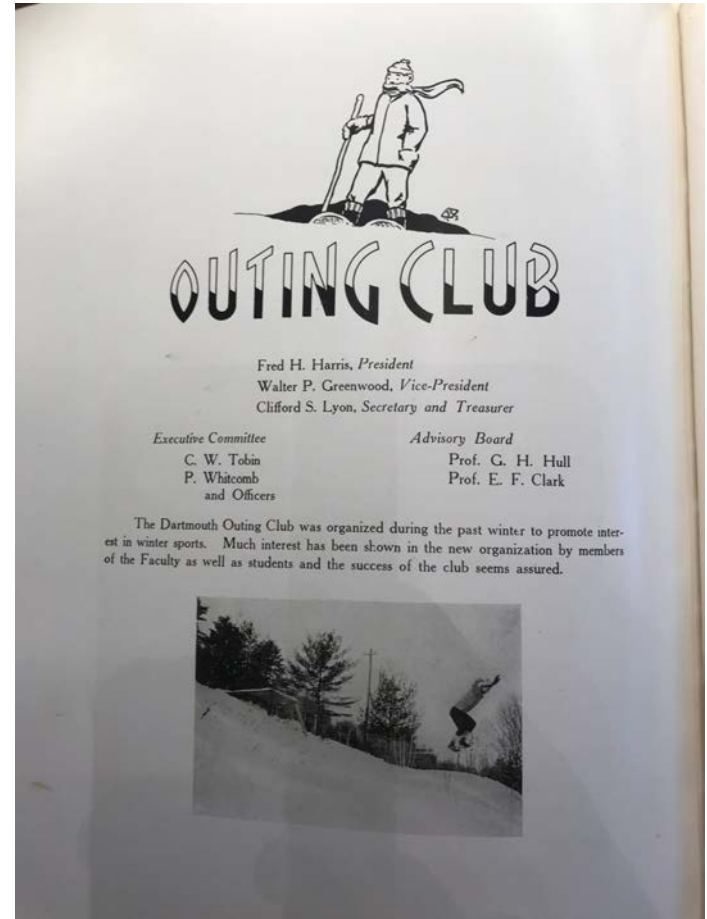
Student Response

- 800 spectators
- “The audience, especially the guests ... made the Winter Carnival so successful”
- foreshadows the direction of future Winter Carnivals



Club Recognition

- *The Aegis* (yearbook) 1911
- “The success of the club seems assured”



National Recognition

- National Geographic article
 - Written by Harris
- Brought Winter Carnival and Dartmouth to the national stage

164

THE NATIONAL GEOGRAPHIC MAGAZINE



Photograph by Dr. Leland Griggs

ALL OFF TOGETHER

A ski threesome takes the air for the downward drop at the Dartmouth "Mardi Gras of the North."

On several occasions members of the Club have succeeded in climbing on skis to the summit of Mount Washington, a feat which, until accomplished by these Dartmouth students, was deemed impossible.

The difficulty of the ascent is not to be discounted by its accomplishment, however; and the descent, especially down the icy, wind-driven slopes above the tree line, is an even more hazardous test of skill.

Usually the ski men rope themselves together like the scalers of Alpine crags; but, once over the dangerous part of the

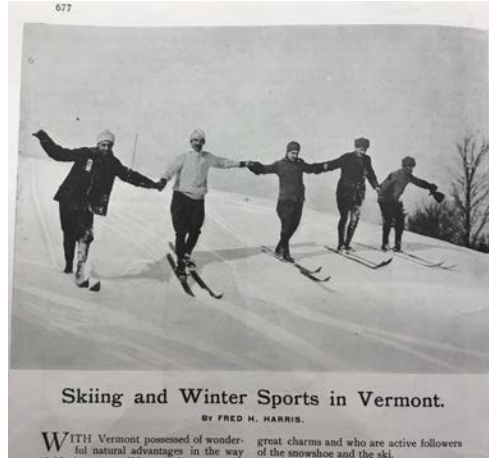
Now there is no inclination on the part of the travelers to tarry. With a vigorous push of the ski poles, the rush begins.

On the steep slope the speed is quickly accelerated to forty miles an hour, as the skis sing and whistle over the snow. On through the woods, at ever-quicken pace, the hikers go, sometimes forced from the path by the rapidity with which they take the curves in the road. Not infrequently there is a spill in the snow, as the moon casts deceptive shadows along the way.

Now and again the incline flattens out

Key Contrasts

Fred Harris' Vision



Reality



Carnival Ball in the Alumni Gym, 1924.

